

# 240 Alton Towers Circle

Multiple commercial leasing opportunities



## Commercial units available for lease in a popular, high-traffic retail plaza in Agincourt.

### Quick Facts

**Residences serviced by plaza:**

5700+ (1700+ high-rise; 4000 low-rise)

**Community population:**

62,000+

**Average household income:**

\$78,000+

**Average property ownership:**

90% (High-rise: 72%; Low-rise: 98%)

240-250 Alton Towers Circle is an iconic community plaza that has serviced the Agincourt community of Scarborough for the better part of 30 years. Surrounded by high-density residential apartment buildings and a surrounding community of low-rise neighbourhoods, the plaza is consistently busy all days of the week, year-round.

Its medical offices have long-term tenants with established practices and since it has come under new management in 2015, the plaza has seen substantial investment, improvement and a new crop of anchor tenants including Dollarama, Kumon and a brand new, soon-to-open Tim Horton's.

Contact us for more information on available retail units and professional office suites for lease.



**Kelvin Wong,**  
Broker of Record

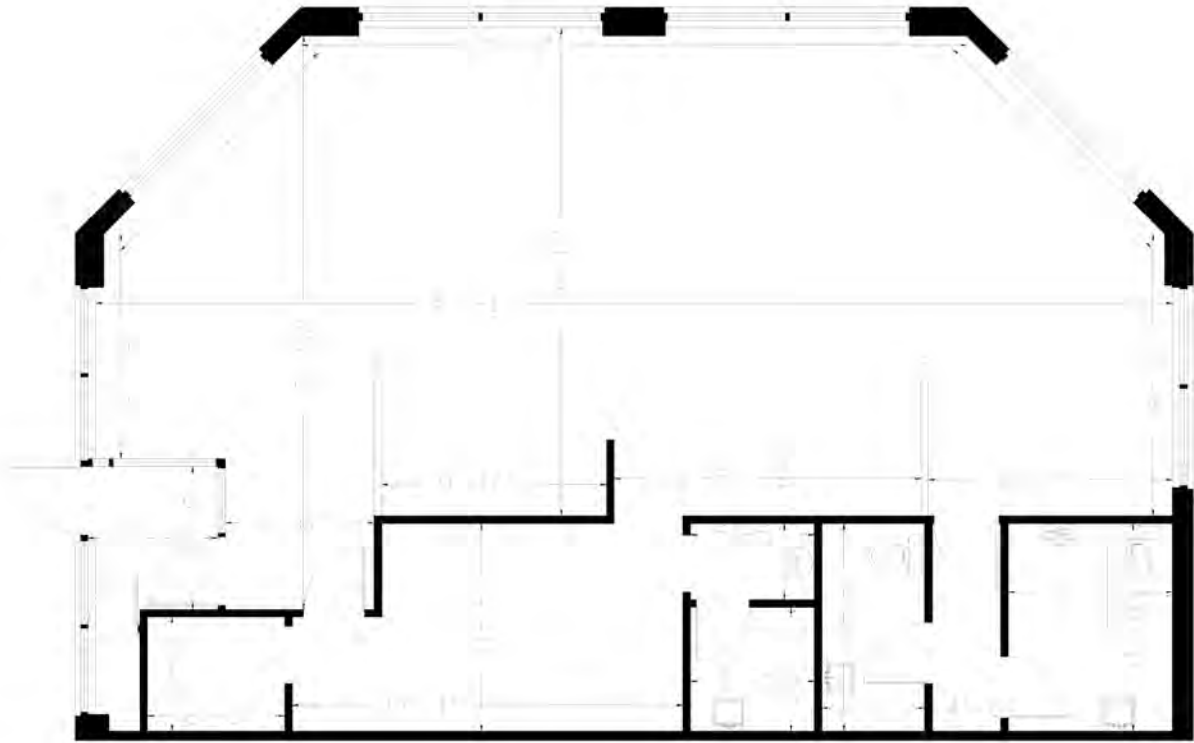
☎ (905) 474-1772

✉ kelvin@livingrealty.com



🌐 [www.livingrealty.com](http://www.livingrealty.com)

## Unit B6



## Lease Details

**Type:** Retail

**Gross Leasable Area:** 1,490 sq. ft.

**Net rent:** \$23 per sq. ft.

**TMI** \$15.75 per sq. ft.

**Occupancy:** Immediate

**Term:** Minimum 3 years

**Acceptable Uses:** Franchise Restaurant;  
Major Chain Retailer; Major Chain Professional Services

**Kelvin Wong,**  
Broker of Record

☎ (905) 474-1772

✉ kelvin@livingrealty.com

    
@livingrealtyinc

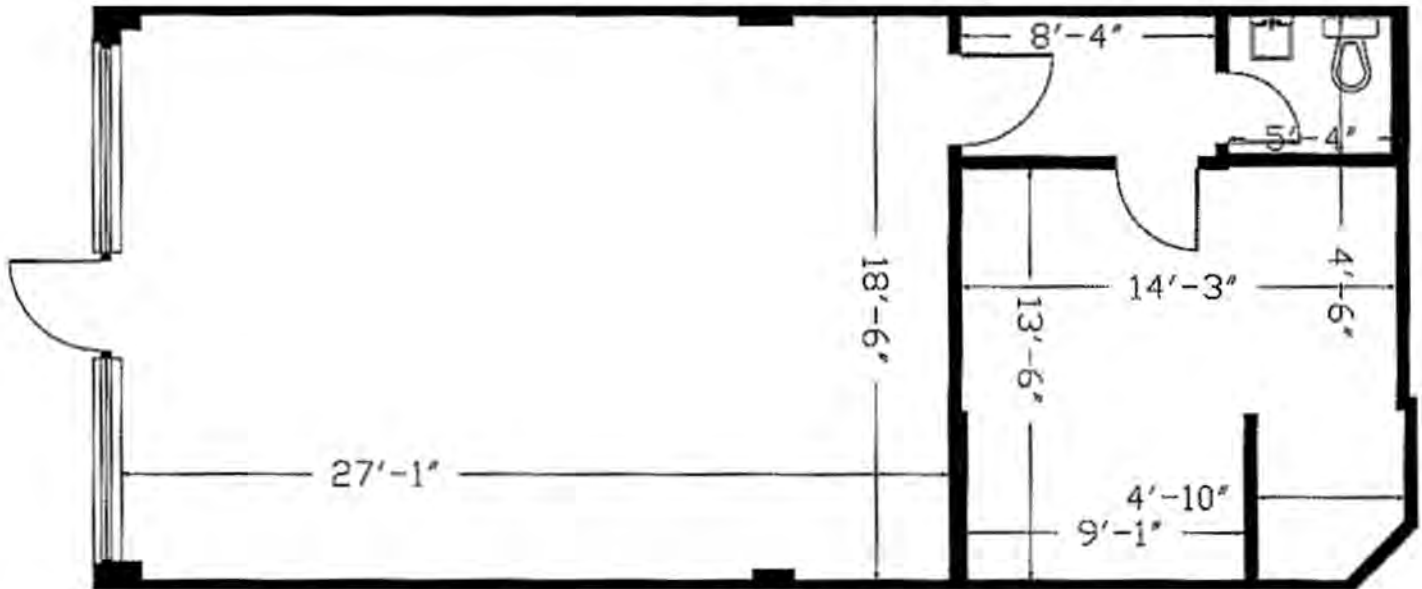
🌐 [www.livingrealty.com](http://www.livingrealty.com)

# 240 Alton Towers Circle

Multiple commercial leasing opportunities



## Unit A4



## Lease Details

**Type:** Retail

**Gross Leasable Area:** 811 sq. ft.

**Net rent:** \$25 per sq. ft.

**TMI:** \$15.75 per sq. ft

**Occupancy:** Immediate

**Term:** Minimum 3 years

**Acceptable Uses:** Variety of Retail;  
Personal Services; Professional Services;  
No Food Services

**Kelvin Wong,**  
Broker of Record

☎ (905) 474-1772

✉ kelvin@livingrealty.com



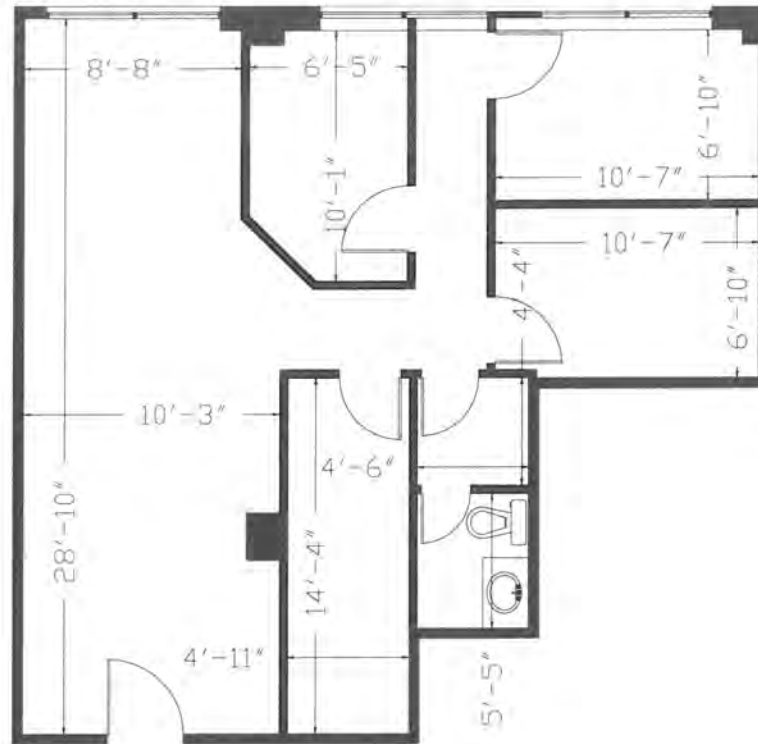
🌐 [www.livingrealty.com](http://www.livingrealty.com)

# 240 Alton Towers Circle

Multiple commercial leasing opportunities



## Suite 210



## Lease Details

**Type:** Office

**Gross Leasable Area:** 716 sq. ft.

**Net rent:** \$13.50 per sq. ft.

**TMI:** \$14.23 per sq. ft.

**Occupancy:** Immediate

**Term:** Minimum 3 years

**Kelvin Wong,**  
Broker of Record

☎ (905) 474-1772

✉ kelvin@livingrealty.com



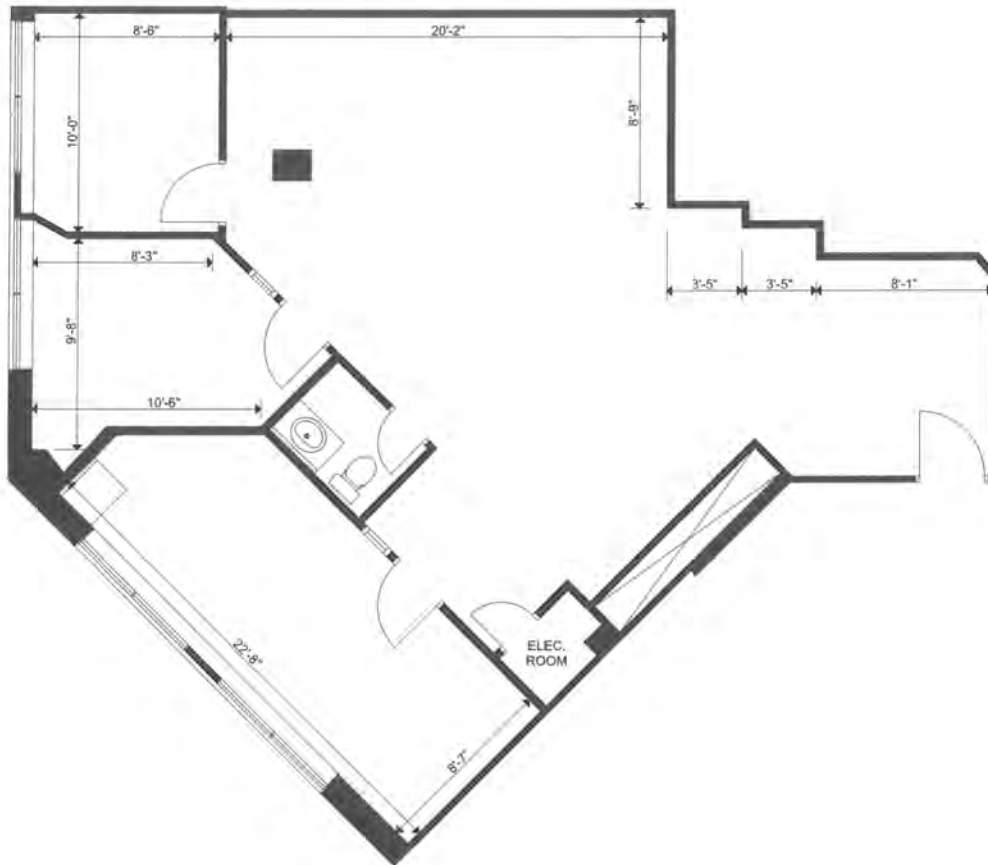
🌐 [www.livingrealty.com](http://www.livingrealty.com)

# 240 Alton Towers Circle

Multiple commercial leasing opportunities



## Suite 200A



### Lease Details

**Type:** Office  
**Gross Leasable Area:** 1,068 sq. ft.  
**Net rent:** \$13.50 per sq. ft.  
**TMI:** \$14.23 per sq. ft.  
**Occupancy:** Immediate  
**Term:** Minimum 3 years

**Kelvin Wong,**  
Broker of Record

☎ (905) 474-1772

✉ kelvin@livingrealty.com



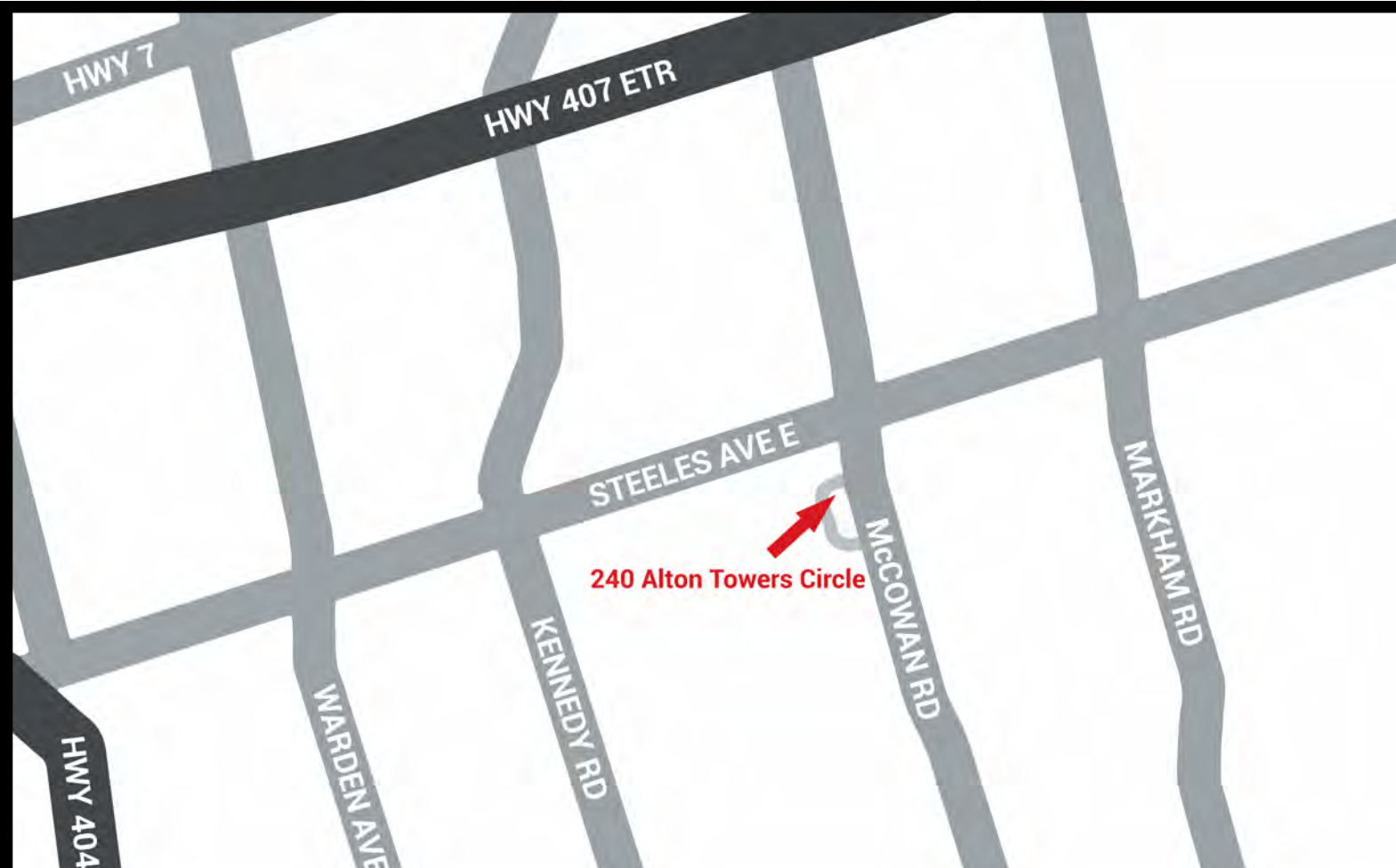
🌐 [www.livingrealty.com](http://www.livingrealty.com)

# 240 Alton Towers Circle

Multiple commercial leasing opportunities



## Location



Popular Scarborough location just a short walk from McCowan Rd & Steeles Avenue. TTC bus just 200m away, Milliken GO station nearby (3km), and easy access to highways 401 (11 minutes), 404 (10 minutes) and 407ETR (8 minutes).

**Kelvin Wong,**  
Broker of Record

☎ (905) 474-1772

✉ [kelvin@livingrealty.com](mailto:kelvin@livingrealty.com)



🌐 [www.livingrealty.com](http://www.livingrealty.com)